



## Medium Chess Puzzle # 0057

By

G Bud Games  
<https://gbud.in>

October 30, 2021

## Contents

<b>Medium Chess puzzle # 0057 - Mate in 2 moves</b>	<b>3</b>
Medium chess puzzle 0057 . . . . .	3
Solution to medium chess puzzle 0057 . . . . .	4
Solution 1 . . . . .	4
Right moves for the solution to the medium chess puzzle 0057	6
Explanation for the moves . . . . .	6
Categories of medium chess puzzle 0057 . . . . .	7
How to view the solution to medium chess puzzle 0057 . . . . .	7
How to get help for moves in the medium chess puzzle 0057 . . . . .	8
Play chess for free . . . . .	9

## List of Figures

1	<a href="https://gbud.in/gl9cyw2">Solve this medium chess puzzle 0057. Mate in 2 moves @ https://gbud.in/gl9cyw2</a> . . . . .	3
2	<a href="https://gbud.in/gl9cyw2">Solve this medium chess puzzle online with solution @ https://gbud.in/gl9cyw2</a> . . . . .	3
3	<a href="#">Initial board position of medium chess puzzle 0057</a> . . . . .	4
4	<a href="#">Rxe4 - This sacrifice of the rook is a decoy move to move the pawn from d5 to clear the diagonal for the queen.</a> . . . . .	5
5	<a href="#">dxe4 - Opponent fell for the decoy move. Since the rook was easily available they captured it.</a> . . . . .	5
6	<a href="#">Qxf7# - Queen captures the pawn and checkmate. Opponent's king can not move to h8 due to the attack from your bishop. This is how you mate in 2 moves</a> . . . . .	6
7	<a href="https://gbud.in/gl9cyw2">Click the solution button to view solutions @ https://gbud.in/gl9cyw2</a> . . . . .	7
8	<a href="https://gbud.in/gl9cyw2">Click the help button to get help on next move @ https://gbud.in/gl9cyw2</a> . . . . .	8
9	<a href="https://gbud.in/chsmdpz">Solve more medium puzzles @ https://gbud.in/chsmdpz</a> . . . . .	8
10	<a href="https://gbud.in/chsgppz">Solve other puzzles @ https://gbud.in/chsgppz</a> . . . . .	8
11	<a href="#">Play chess online for free. Solve puzzles and play with friends</a> . . . . .	9
12	<a href="#">Solve this puzzle online by scanning this QR code or go to the link below</a> . . . . .	10

## Medium Chess puzzle # 0057 - Mate in 2 moves

Solve this medium chess puzzle and improve your chess games through improvement of your chess strategies and chess tactics.

Puzzle No : 0057

Difficulty level : medium

Description : Mate in 2 moves

Next Move : White

Player level : Intermediate

Short URL for puzzle : <https://gbud.in/gl9cyw2>

### Medium chess puzzle 0057

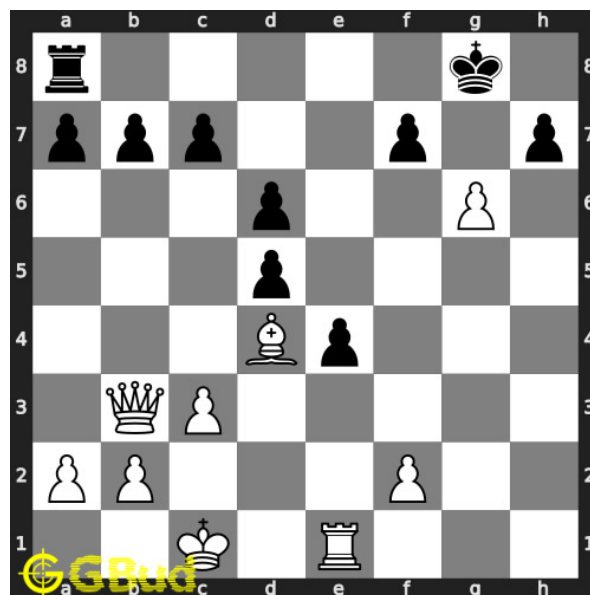


Figure 1: Solve this medium chess puzzle 0057. Mate in 2 moves @ <https://gbud.in/gl9cyw2>



Figure 2: Solve this medium chess puzzle online with solution @ <https://gbud.in/gl9cyw2>

## Solution to medium chess puzzle 0057

At this puzzle, next **move** is by **White**. The objective of the puzzle is to mate in 2 moves.

See the interactive solution at the [puzzle page](#)

### Solution 1

**Initial board position** This is the initial board position of medium chess puzzle 0057.

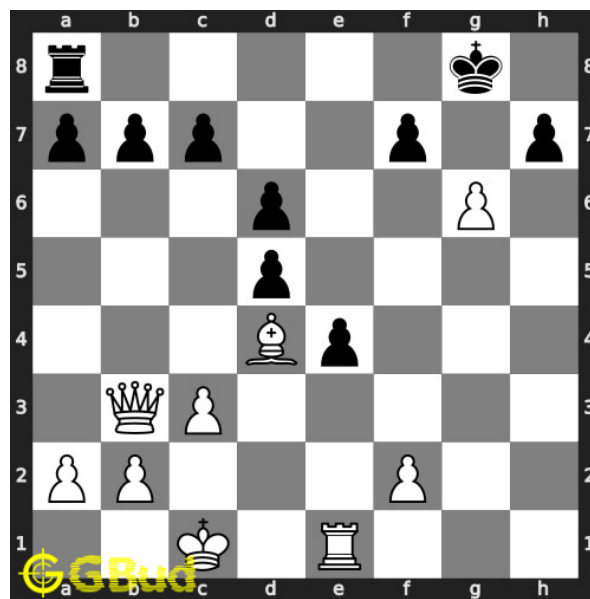


Figure 3: Initial board position of medium chess puzzle 0057

**Move 1** Move by white

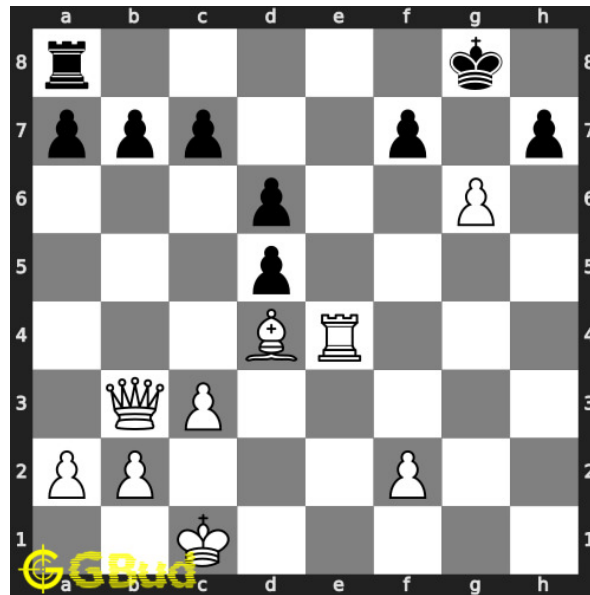


Figure 4: Rxe4 - This sacrifice of the rook is a decoy move to move the pawn from d5 to clear the diagonal for the queen.

**Move 2** Move by black

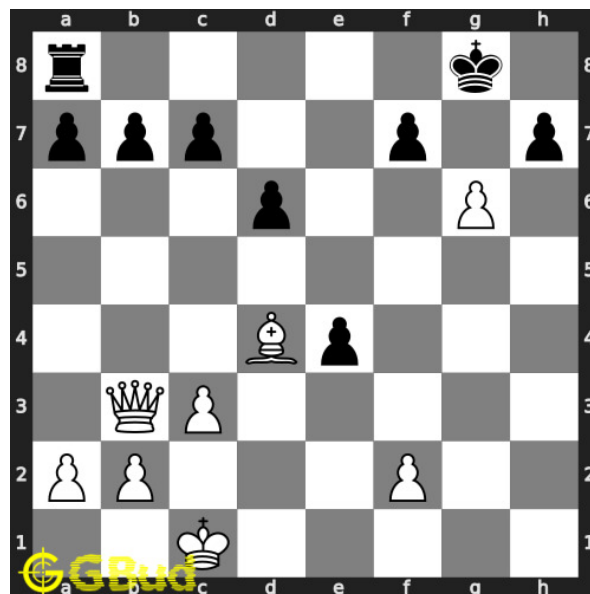


Figure 5: dxe4 - Opponent fell for the decoy move. Since the rook was easily available they captured it.

**Move 3** Move by white

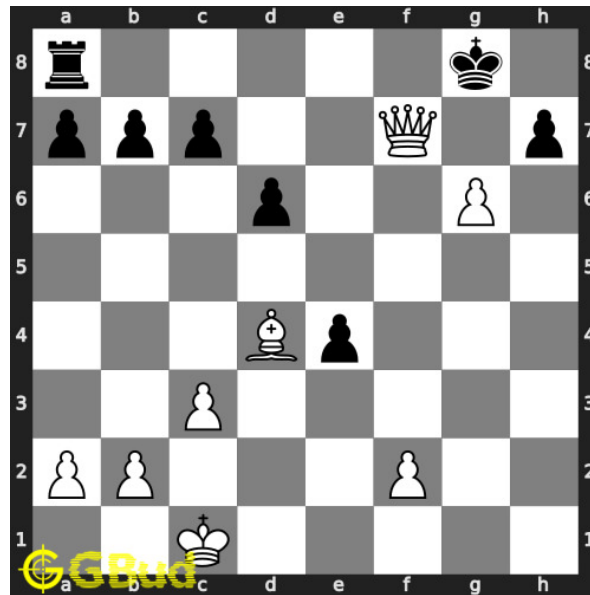


Figure 6:  $Qxf7\#$  - Queen captures the pawn and checkmate. Opponent's king can not move to h8 due to the attack from your bishop. This is how you mate in 2 moves

### Right moves for the solution to the medium chess puzzle 0057

Based on the objective of the puzzle, you have to make the right moves. Following are the right moves

1.  $Rxe4, Qxf7\#$

### Explanation for the moves

1.  $Rxe4$  - This sacrifice of the rook is a decoy move to move the pawn from d5 to clear the diagonal for the queen.
2.  $Qxf7\#$  - Queen captures the pawn and checkmate. Opponent's king can not move to h8 due to the attack from your bishop. This is how you mate in 2 moves
3.  $dxe4$  - Opponent fell for the decoy move. Since the rook was easily available they captured it.
4. For right move - You have sacrificed your rook wisely. It was a good decoy move required for the checkmate
5. For wrong move - You could have sacrificed your rook to have mate in 2 moves. Try again

## Categories of medium chess puzzle 0057

This medium chess puzzle falls in these categories.

1. [Medium chess puzzles](#)
2. [Sacrifice puzzles in chess](#)
3. [Mate in 2 puzzles in chess](#)
4. [Endgame puzzles in chess](#)
5. [Decoy puzzles in chess](#)
6. [Strategy puzzles in chess](#)

## How to view the solution to medium chess puzzle 0057

To view the [solution to this puzzle](#), follow the steps given below

1. Go to the [puzzle page](#)
2. Click the solution button (Key as shown [below](#)) to view the solution



Figure 7: Click the solution button to view solutions @ <https://gbud.in/gl9cyw2>

## How to get help for moves in the medium chess puzzle 0057

To get help or the possible next moves in the puzzle, , follow the steps given below

1. Go to the [puzzle page](#)
2. Click the help button (exclamation mark as shown [below](#)) to get help or suggestion on next possible [move](#)



Figure 8: Click the help button to get help on next move @ <https://gbud.in/gl9cyw2>



Figure 9: Solve more medium puzzles @ <https://gbud.in/chsmdpz>



Figure 10: Solve other puzzles @ <https://gbud.in/chsgppz>



## Play chess for free

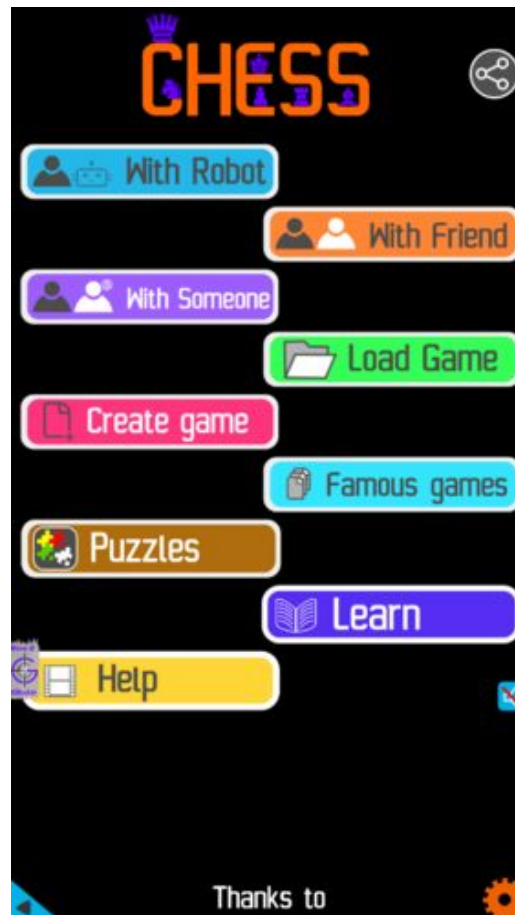


Figure 11: Play chess online for free. Solve puzzles and play with friends

Play chess for free at <https://gbud.in/chs>

We present you a platform to play chess online with friends for free. No need to install any app. You can play chess for free without registration or login.

Simple. You can do several chess related activities.

1. [solve chess puzzles](#)
2. [learn about chess](#)
3. [play chess with computer](#)
4. [play chess with friend](#)
5. [create your own chess games](#)

6. [fen viewer](#)
7. [fen editor](#)
8. [fen generator](#)
9. [pgn viewer](#)
10. [chess board editor](#)
11. [view famous chess games.](#)



Figure 12: Solve this puzzle online by scanning this QR code or go to the link below

<https://gbud.in/gl9cyw2>

Read the latest article on Medium Chess puzzle # 0057 - Mate in 2 moves by scanning this QR code or click the link

Previous article : [« Medium Chess puzzle # 0056 - Gain queen in 3 moves](#)

Next article : [Medium Chess puzzle # 0058 - Mate in 2 moves »](#)

[Back to top](#)

[Contact Us](#)